

February 27, 2015

**Attention:** Alicia Czerniawski  
ANRIC ENTERPRISES INC  
701 EVANS AVENUE STE 202  
TORONTO, ON M9C 1A3

The design submission, tracking number 2015-00587, originally received on January 21, 2015 was surveyed and accepted for registration as follows:

**CRN :** R1130.52

**Accepted on:** February 27, 2015

**Reg Type:** New Design

**Drawing No. :** 531D-300390 Rev 01 As Noted

Design registered in the name of : CP INDUSTRIES

| <b>Description</b>  | <b>MAWP</b> | <b>Design Temperature</b> |
|---------------------|-------------|---------------------------|
| see drw. for rating |             |                           |

**The registration is conditional on your compliance with the following notes:**

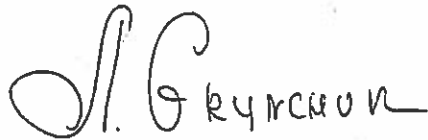
*Vessels are designed to ANSI NGV2-2007 code.*

*This submission has been accepted for registration based review and acceptance of the design under CRN R1130.5 by another jurisdiction, in accordance with the Association of Chief Inspectors Policy on Reciprocal Recognition of Design Review for Fitting Design Registration."*

An invoice covering survey and registration fees will be forwarded from our Revenue Accounts.

Enclosed are stamped prints for your reference.

Sincerely,



GRYNCHUK, MILLA

CRS also covers drawings:  
 531E - 101090  
 531A - 201090

| MATERIAL | CHEMICAL COMPOSITION IN PERCENT |      |      |       |       |       |      |      | MECH. PROPERTIES    |                         |                     |                         | Y/T. RATIO (FOR DESIGN) | TEST PRESSURE | 37.2 MPa<br>372 BAR      | BURST PRESSURE |            |
|----------|---------------------------------|------|------|-------|-------|-------|------|------|---------------------|-------------------------|---------------------|-------------------------|-------------------------|---------------|--------------------------|----------------|------------|
|          | C.                              | Si.  | Mn.  | P.    | S.    | P+S   | Mo.  | Cr.  | T.S.                |                         | Y.S. (MIN)          |                         |                         |               |                          |                | ELONGATION |
| 34CrMo4  | 0.31                            | 0.10 | 0.50 | 0.015 | 0.010 | 0.020 | 0.15 | 0.90 | Kgf/mm <sup>2</sup> | N/mm <sup>2</sup> (MPa) | Kgf/mm <sup>2</sup> | N/mm <sup>2</sup> (MPa) | GL.5.65√So              | 0.90 (MAX)    | WORKING PRESSURE AT 15°C | 24.8 MPa       | 55.8 MPa   |
|          | 0.38                            | 0.40 | 0.80 | (MAX) | (MAX) | (MAX) | 0.30 | 1.20 | 103.9-112           | 1020-1100               | 87.6                | 860                     | 14% (MIN)               |               |                          | 24.8 BAR       | 55.8 BAR   |

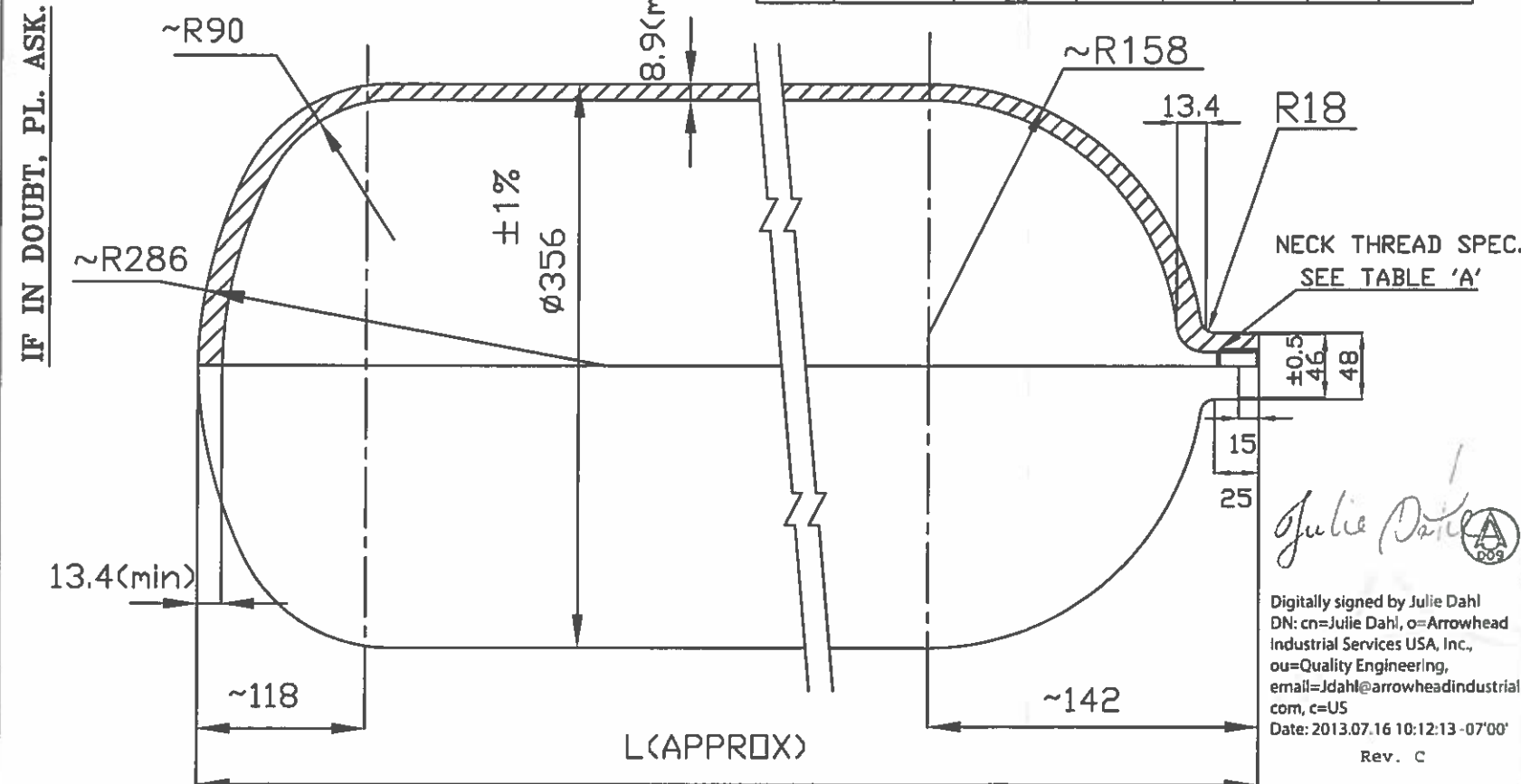
DESIGN, MANUFACTURING, TESTING, ACCEPTANCE  
 AS PER ANSI NGV 2  
 MANUFACTURING PROCESS : HOT SPINNING OF SEAMLESS STEEL TUBE.  
 HEAT TREATMENT - QUENCHED & TEMPERED  
 HARDENING AT : 860°C ± 30°C - 30 Minute (Min)  
 TEMPERING AT : 570°C ± 30°C - 45 Minute (Min)  
 HARDNESS RANGE : 295 - 330 BHN

NOTE:- ALL DIMENSIONS ARE IN MM.

| THREAD SPECIFICATION TABLE-'A' |           |                |              |        |             |             |               |
|--------------------------------|-----------|----------------|--------------|--------|-------------|-------------|---------------|
| CODE                           | STD.      | TYPE           | TAPER ON DIA | PITCH  | NECK DIA(D) | NECK DIA(d) | THREAD LENGTH |
| NG                             |           | (3/4"-NGT)     | 1:16         | 14,TPI | 48.00       | 46.00       | 18.00         |
| DN                             | (DIN-477) | 28.8           | 3:25         | 14,TPI | 48.00       | 46.00       | 22.00         |
| EN                             | EN629-1   | 25E            | 3:25         | 14,TPI | 48.00       | 46.00       | 22.00         |
| PR                             |           | 1 1/8"12UNF-2B | -            | -      | 48.00       | 46.00       | 19.5          |

SAFETY CODES ACT - PROVINCE OF ALBERTA  
 REG. NO. **R1130.52**  
 DWG. No. **531A-300390, P.1**  
 MAWP kPa Design Temp. °C  
 See tables for rating  
**ACCEPTED**  
**FEB 27 2015**  
 Date  
 MILLA GRYNCHUK, P.Eng.  
 DESIGN SURVEY ENGINEER

This is the exclusive property of Everest Kanto Cylinder Ltd. & should not be issued or transferred to any individuals or firms use for any purpose other than intended. This should not be copied, traced, modified, sketched, printed, reproduced in any manner what so ever either or full & should be returned to Everest Kanto Cylinder Ltd. When done with.



|                 |                             |                        |                        |
|-----------------|-----------------------------|------------------------|------------------------|
| /P              | 180.0                       | 173.0                  | 2175                   |
| /O              | 170.0                       | 182.0                  | 2065                   |
| /N              | 160.0                       | 173.0                  | 1950                   |
| /M              | 150.0                       | 163.0                  | 1840                   |
| /L              | 140.0                       | 154.0                  | 1725                   |
| /K              | 130.0                       | 144.0                  | 1610                   |
| /J              | 120.0                       | 135.0                  | 1500                   |
| /I              | 110.0                       | 125.0                  | 1385                   |
| /H              | 100.0                       | 116.0                  | 1270                   |
| /G              | 90.0                        | 106.0                  | 1155                   |
| /F              | 85.0                        | 101.0                  | 1095                   |
| /E              | 80.0                        | 97.0                   | 1040                   |
| /D              | 75.0                        | 92.0                   | 985                    |
| /C              | 60.0                        | 78.0                   | 820                    |
| /B              | 55.0                        | 73.0                   | 760                    |
| SUFIX TO DRG NO | NOMINAL WATER CAPACITY LTR. | TARE. WT. Kg. (APPROX) | LENGTH 'L' mm (APPROX) |

|       |   |            |         |          |
|-------|---|------------|---------|----------|
| 01    | Thread 1 1/8"12UNF-2B & Water Capacity 110-180 Ltrs added | 13.07.2013 | Ayush   | V.K.K    |
| RevNo | Revision note   | Date       | Checked | Approved |

Item ref Quantity material --- Article No./Reference  
 Designed by Jaspal Checked by Ayush Approved by V.K.K. File Name 356X8.9 ANSI NGV-2 Date 9/10/2012 Scale N.T.S.  
 Owner **EKC** Title/Name ø356 ± 8.9 SEAMLESS GAS CYLINDER  
 Drawing number **531D-300390**

| MATERIAL | CHEMICAL COMPOSITION IN PERCENT |      |      |       |       |       |      |      | MECH. PROPERTIES |                            |            |                            | Y/T. RATIO<br>(FOR DESIGN) | TEST PRESSURE | 5400 psig<br>372 BAR        | BURST PRESSURE |            |
|----------|---------------------------------|------|------|-------|-------|-------|------|------|------------------|----------------------------|------------|----------------------------|----------------------------|---------------|-----------------------------|----------------|------------|
|          | C.                              | Si.  | Mn.  | P.    | S.    | P+S   | Mo.  | Cr.  | T.S.             |                            | Y.S. (MIN) |                            |                            |               |                             |                | ELONGATION |
| 34CrMo4  | 0.31                            | 0.10 | 0.50 | 0.015 | 0.010 | 0.020 | 0.15 | 0.90 | ksi              | N/mm <sup>2</sup><br>(MPa) | ksi        | N/mm <sup>2</sup><br>(MPa) | GL.5.65√So                 | 0.90 (MAX)    | WORKING PRESSURE<br>AT 15°C | 3600 psig      | 8100 psig  |
|          | 0.38                            | 0.40 | 0.80 | (MAX) | (MAX) | (MAX) | 0.30 | 1.20 | 143.5            | 990                        | 121.8      | 840                        | 14% (MIN)                  |               |                             | 248 BAR        | 558 BAR    |

DESIGN, MANUFACTURING, TESTING, ACCEPTANCE, AS PER ANSI NGV 2  
 MANUFACTURING PROCESS : HOT SPINNING OF SEAMLESS STEEL TUBE

IF IN DOUBT, PL. ASK.

HEAT TREATMENT - QUENCHED & TEMPERED

HARDENING AT : 860°C ± 30°C - 30 Minute (Min)

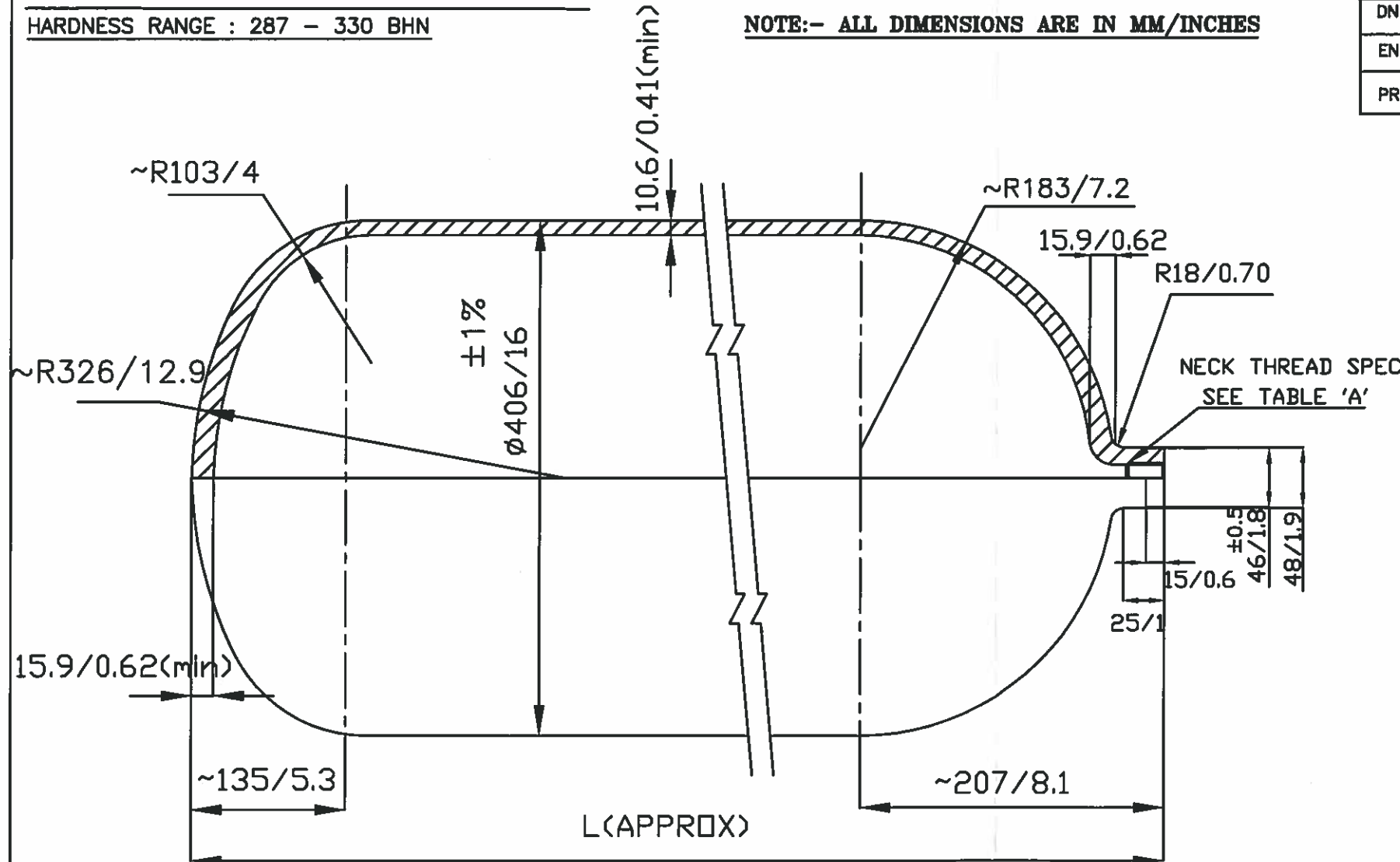
TEMPERING AT : 570°C ± 30°C - 45 Minute (Min)

HARDNESS RANGE : 287 - 330 BHN

NOTE:- ALL DIMENSIONS ARE IN MM/INCHES

| THREAD SPECIFICATION TABLE-'A' |           |                |              |        |             |             |               |
|--------------------------------|-----------|----------------|--------------|--------|-------------|-------------|---------------|
| CODE                           | STD.      | TYPE           | TAPER ON DIA | PITCH  | NECK DIA(D) | NECK DIA(d) | THREAD LENGTH |
| NG                             |           | (3/4"-NGT)     | 1:16         | 14,TPI | 48.00       | 46.00       | 18.00         |
| DN                             | (DIN-477) | 28.8           | 3:25         | 14,TPI | 48.00       | 46.00       | 22.00         |
| EN                             | EN629-1   | 25E            | 3:25         | 14,TPI | 48.00       | 46.00       | 22.00         |
| PR                             |           | 1 1/8"12UNF-2B | -            | -      | 48.00       | 46.00       | 19.5          |

|                  |                             |                         |                             |
|------------------|-----------------------------|-------------------------|-----------------------------|
| /O               | 190.0                       | 239.0/527               | 1820/71.66                  |
| /N               | 180.0                       | 228.0/503               | 1730/68.12                  |
| /M               | 170.0                       | 218.0/481               | 1645/64.77                  |
| /L               | 160.0                       | 207.0/457               | 1555/61.23                  |
| /K               | 150.0                       | 197.0/435               | 1465/57.68                  |
| /J               | 140.0                       | 186.0/410               | 1380/54.34                  |
| /I               | 130.0                       | 176.0/388               | 1290/50.79                  |
| /H               | 121.0                       | 166.0/366               | 1219/48.0                   |
| /G               | 120.0                       | 165.0/364               | 1205/47.45                  |
| /F               | 110.0                       | 155.0/342               | 1115/43.90                  |
| /E               | 100.0                       | 145.0/320               | 1025/40.36                  |
| /D               | 96.0                        | 140.0/309               | 990/39.0                    |
| /C               | 90.0                        | 134.0/296               | 940/37.01                   |
| /B               | 85.0                        | 129.0/285               | 895/35.24                   |
| /A               | 80.0                        | 124.0/274               | 850/33.47                   |
| SUFFIX TO DRG NO | NOMINAL WATER CAPACITY LTR. | TARE.WT.Kg/Lbs (APPROX) | LENGTH 'L' mm/inch (APPROX) |



This is the exclusive property of Everest Kanto Cylinder Ltd. & should not be issued or transferred to any individuals or firms use for any purpose other than intended. This should not be copied, traced, modified, sketched, printed, reproduced in any manner what so ever either or full & should be returned to Everest Kanto Cylinder Ltd. When done with.

R1130-52

| RevNo | Revision note | Date | Checked | Approved |
|-------|---------------|------|---------|----------|
|       |               |      |         |          |

|             |            |             |      |  |
|-------------|------------|-------------|------|--|
| Item ref    | Quantity   | material    | ---  | Article No./Reference                    |
| Designed by | Checked by | Approved by | date | File Name                                |
|             |            |             |      | 406X10.6 ANSI NGV-2                      |
|             |            |             |      | Date                                     |
|             |            |             |      | 12-04-2014                               |
|             |            |             |      | Scale                                    |
|             |            |             |      | N.T.S.                                   |
| Owner       |            |             |      | Title/Name                               |
|             |            |             |      | 406/16 x 10.6/0.41 SEAMLESS GAS CYLINDER |
|             |            |             |      | Drawing number                           |
|             |            |             |      | 531E-101090                              |

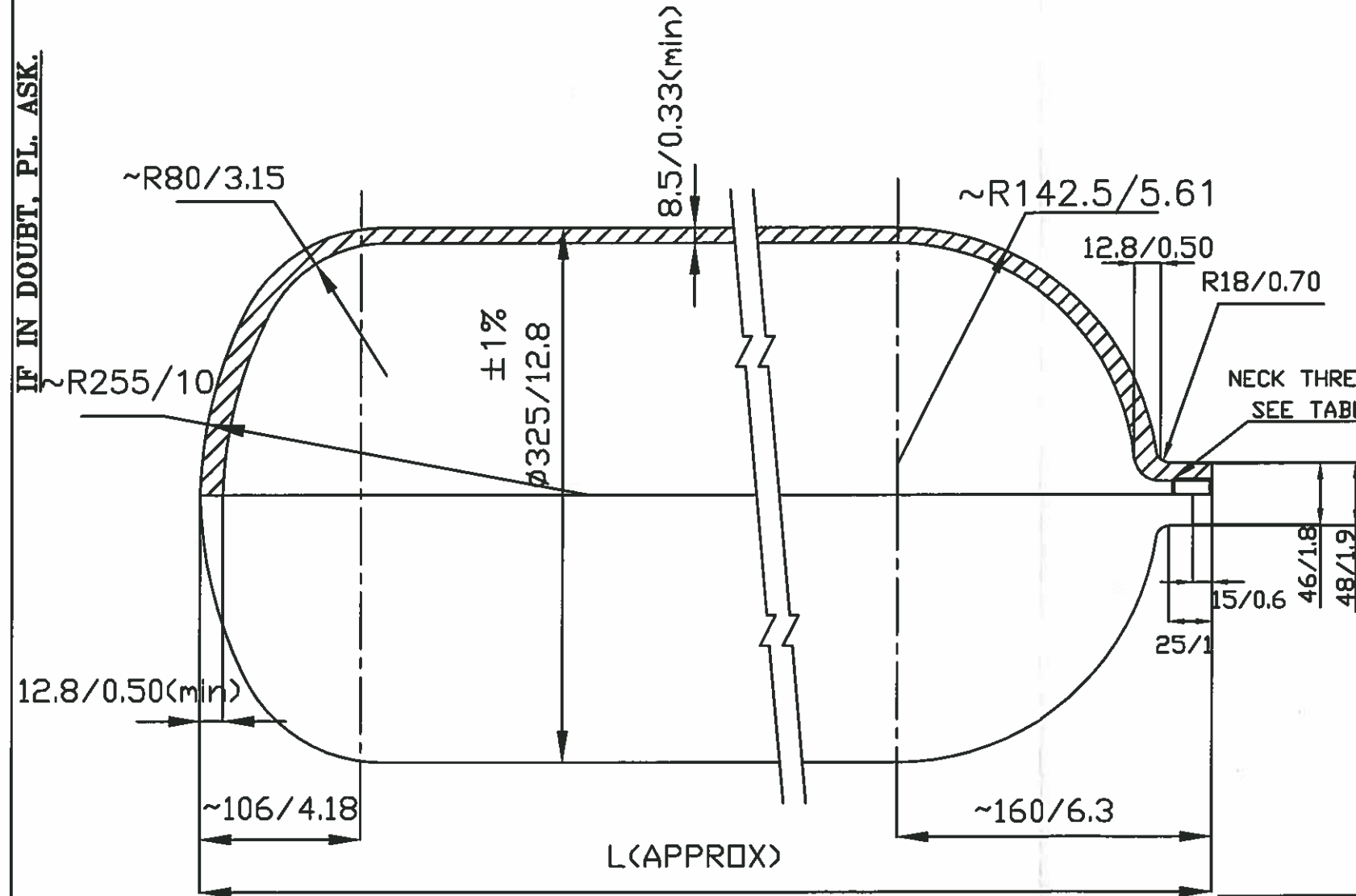
| MATERIAL | CHEMICAL COMPOSITION IN PERCENT |      |      |       |       |       |      |      | MECH. PROPERTIES |                            |            |                            | Y/T. RATIO<br>(FOR DESIGN) | TEST PRESSURE | 5400 psig<br>372 BAR        | BURST PRESSURE |            |
|----------|---------------------------------|------|------|-------|-------|-------|------|------|------------------|----------------------------|------------|----------------------------|----------------------------|---------------|-----------------------------|----------------|------------|
|          | C.                              | Si.  | Mn.  | P.    | S.    | P+S   | Mo.  | Cr.  | T.S.             |                            | Y.S. (MIN) |                            |                            |               |                             |                | ELONGATION |
| 34CrMo4  | 0.31                            | 0.10 | 0.50 | 0.015 | 0.010 | 0.020 | 0.15 | 0.90 | ksi              | N/mm <sup>2</sup><br>(MPa) | ksi        | N/mm <sup>2</sup><br>(MPa) | GL.5.65√So                 | 0.90 (MAX)    | WORKING PRESSURE<br>AT 15°C | 3600 psig      | 8100 psig  |
|          | 0.38                            | 0.40 | 0.80 | (MAX) | (MAX) | (MAX) | 0.30 | 1.20 | 143.5            | 990                        | 121.8      | 840                        | 14% (MIN)                  |               |                             | 248 BAR        | 558 BAR    |

DESIGN, MANUFACTURING, TESTING, ACCEPTANCE  
AS PER ANSI NGV 2  
MANUFACTURING PROCESS : HOT SPINNING OF  
SEAMLESS STEEL TUBE.

NOTE:- ALL DIMENSIONS ARE IN MM/INCHES

| THREAD SPECIFICATION TABLE-'A' |           |                |              |        |             |             |               |
|--------------------------------|-----------|----------------|--------------|--------|-------------|-------------|---------------|
| CODE                           | STD.      | TYPE           | TAPER ON DIA | PITCH  | NECK DIA(D) | NECK DIA(d) | THREAD LENGTH |
| NG                             |           | (3/4"-NGT)     | 1:18         | 14,TPI | 48.00       | 48.00       | 18.00         |
| DN                             | (DIN-477) | 28.8           | 3:25         | 14,TPI | 48.00       | 48.00       | 22.00         |
| EN                             | EN629-1   | 25E            | 3:25         | 14,TPI | 48.00       | 48.00       | 22.00         |
| PR                             |           | 1 1/8"12UNF-2B | --           | --     | 48.00       | 46.00       | 19.5          |

|                  |                             |                          |                           |
|------------------|-----------------------------|--------------------------|---------------------------|
| /P               | 140.0                       | 167.0/368                | 2045/80.52                |
| /O               | 130.0                       | 157.0/346                | 1910/75.20                |
| /N               | 120.0                       | 146.0/322                | 1770/69.69                |
| /M               | 110.0                       | 136.0/300                | 1630/64.18                |
| /L               | 100.0                       | 126.0/278                | 1495/58.86                |
| /K               | 90.0                        | 115.0/254                | 1355/53.35                |
| /J               | 85.0                        | 110.0/243                | 1290/50.74                |
| /I               | 80.0                        | 105.0/232                | 1220/48.04                |
| /H               | 75.0                        | 99.0/218                 | 1150/45.28                |
| /G               | 70.0                        | 94.0/207                 | 1080/42.52                |
| /F               | 65.0                        | 89.0/196                 | 1010/39.77                |
| /E               | 60.0                        | 84.0/185                 | 945/37.21                 |
| /D               | 55.0                        | 78.0/172                 | 875/34.45                 |
| /C               | 51.0                        | 74.0/163                 | 813/32.00                 |
| /B               | 50.0                        | 73.0/161                 | 805/31.70                 |
| /A               | 49.0                        | 72.0/159                 | 787/31.00                 |
| SUFFIX TO DRG NO | NOMINAL WATER CAPACITY LTR. | TARE.WT.Kg/Lbs. (APPROX) | LENGTH'L'mm/inch (APPROX) |



This is the exclusive property of Everest Kanto Cylinder Ltd. & should not be issued or transferred to any individuals or firms use for any purpose other than intended. This should not be copied, traced, modified, sketched, printed, reproduced in any manner what so ever either or full & should be returned to Everest Kanto Cylinder Ltd. When done with.

R130.52

| RevNo | Revision note | Date | Checked | Approved |
|-------|---------------|------|---------|----------|
|       |               |      |         |          |

|             |            |                    |  |                       |
|-------------|------------|--------------------|--|-----------------------|
| Itemref     | Quantity   | material           | ---  | Article No./Reference |
| Designed by | Checked by | Approved by - date | File Name                                  | Date                  |
|             |            |                    | 325X8.5 ANSI NGV-2                         | 12-04-2014            |
| Owner       | EKC        |                    | Title/Name                                 | Scale                 |
|             |            |                    | ø325/12.8 ± 8.5/0.33 SEAMLESS GAS CYLINDER | N.T.S.                |
|             |            |                    | Drawing number                             | 531D-201090           |

EKC INTERNATIONAL-DUBAI